

# ENGINE HEART

## Newsflash / Quadro-copper Instructions

Papercraft Model  
By Jim Bowen



1



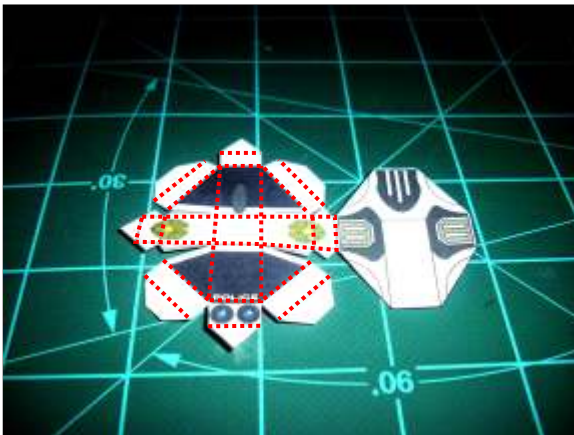
Print the model page on card stock and get your supplies ready. You will need Scissors, Glue, a hobby knife, an edging marker, a ruler and a cutting mat.

2



Cut out all of the pieces. Use the marker to hide all the white edges along the cut lines.

3



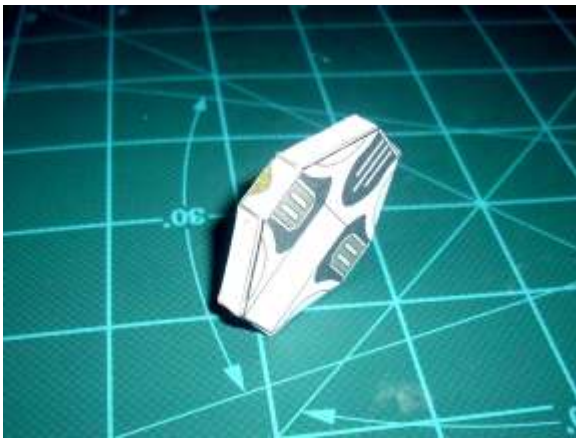
These instructions will work for both the Newsflash and Quadro-copper robots. Start with the main body of whichever version you are building. Fold along the lines shown in **RED**.

4



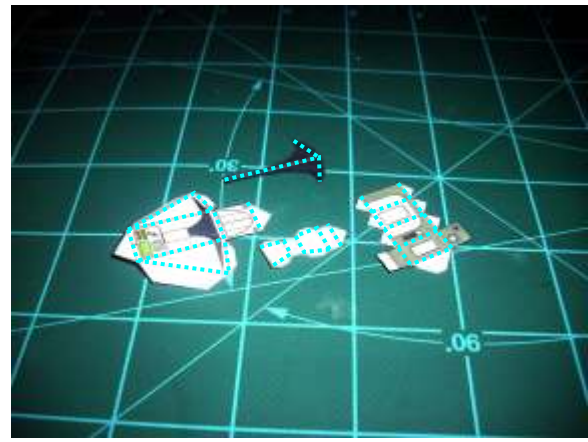
Glue the tabs along the upper portion of the main body and form the top shell.

5



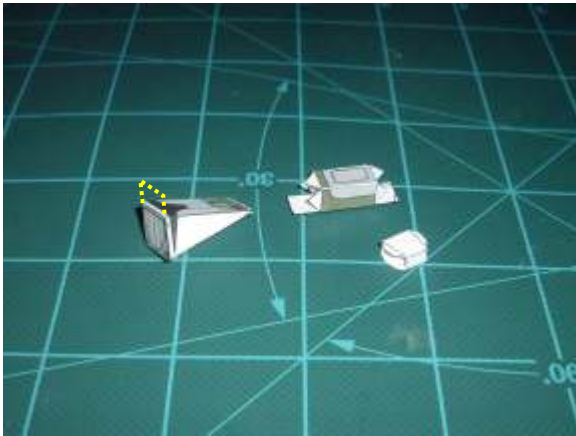
Glue the remaining tabs and seal the bottom section of the main body together.

6



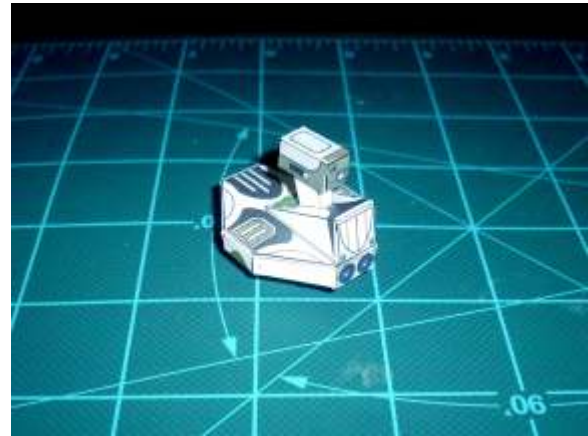
Find the Face Screen/Screen part, the camera stem, the camera and the antenna parts and fold them along the **BLUE** lines shown here.

7



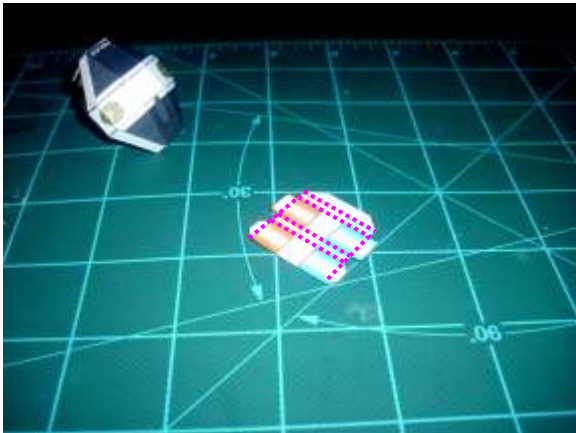
Glue the tabs of the Face Screen/Screen, the camera and the camera stem and form the shapes together. Note that the Face Screen will stick up farther than the Speaker. There is an extra lense piece for the Newsflash robot that will be rolled.

8



Glue and attach the camera to the stem, then the stem to the face screen/speaker. Attach the resulting section underneath the main body. Note that the face screen of the Newsflash robot will cover where the "eyes" are shown here.

9



For the Quadro-copper robot, find the lights. Fold this part along the lines shown in **MAGENTA**. For the Newsflash robot, skip to step 12.

10



Glue and attach the lights to the top of the main body.



11



Glue both halves of the antenna together after folding it in half. Fold the bottom tabs outward to form a base for it and attach it to the marked spot on the top of the main body.

12



Find the four fan units and fold them along the **GREEN** lines shown here.

13



Fold the long edge around and glue it to the tab on the opposite side.

14



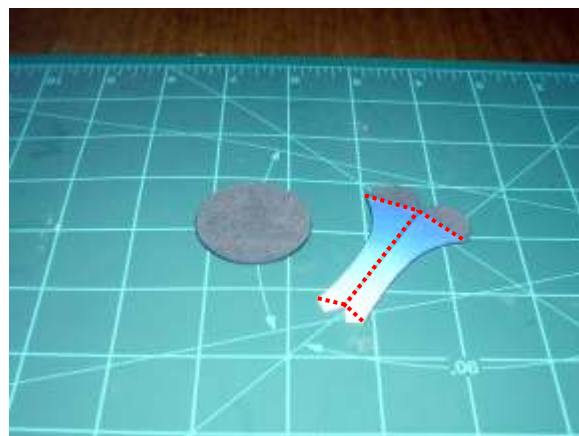
Glue the remaining tabs and close both the top and bottom flaps of each fan unit. Repeat steps 12-14 for each of the four fan units.

15



Glue the back section of each fan unit and adhere them to the main body as shown. Make sure the black rotor stems are on the side facing up.

16



Fins the two parts of the stand. Both of these parts should be double-layered (glue them over the top of another sheet and cut them out). Fold the stem part of the stand along the lines in **RED**.

17



Glue both halves of the stem together with the bottom and top tabs folded outward. Glue the round tabs to the round base.

18



Glue the top of the base and attach it to the underside of the model. You are now finished.