

In A Mellow Tone (In A Mellotone)

(Medium Swing)

Duke Ellington

A

4 4	B ^b ₇		E ^b ₇		A ^b ₆		⌵	
	E ^b ₋₇		A ^b ₇		D ^b _{Δ7}		⌵	
	D ^b ₆		G ^b ₇		A ^b ₆		F ₇	
	B ^b ₇		⌵		E ^b ₇		F ₇	

B

	B ^b ₇		E ^b ₇		A ^b ₆		⌵	
	E ^b ₋₇		A ^b ₇		D ^b _{Δ7}		⌵	
	D ^b ₇		D _{o7}		A ^b ₆ ⌵ E ^b		F ₇	
	B ^b ₇		E ^b ₇		A ^b ₆		F ₇	

Indiana

(Medium Swing)

Hanley, McDonald (1917)

4 4 F	D ₇	G ₇	∕.	
C ₇	∕.	F	F ₇	
B ^b	B ₋ ^b	F	D ₇	
G ₇	∕.	C ₇	∕.	
F	D ₇	G ₇	∕.	
A ₇	∕.	D ₋	D ₇ ^b	
F	A ₇	D ₋	F _o	
F	C ₇	F	∕.	

(Medium Swing)

Exactly Like You

Jimmy McHugh

A

$\frac{4}{4}$ B_6^b

✂

C_7

✂

F_7

✂

B_6^b

C_{-7} F_7 }

B_6^b

B_7^b

B

$\text{E}_{\Delta 7}^b$

A_7^b

B_6^b

G_{-7}

C_{-7}

E_{-6}^b F_7

D_{-7} $\text{D}_{\text{o}7}^b$

C_{-7} F_7 ||

A

B_6^b

✂

C_7

✂

F_7

✂

B_6^b

C_{-7} F_7 ||

I Can't Give You Anything But Love

(Medium Swing)

Jimmy McHugh

A

$\frac{4}{4}$ **F**_{Δ7}

A^b_{o7}

G₋₇

C₇

F_{Δ7}

A^b_{o7}

G₋₇

C₇

B

F_{Δ7}

C₋₇ **F**₇

B^b_{Δ7}

⌵

G₇

⌵

G₋₇

C₇

A

F_{Δ7}

A^b_{o7}

G₋₇

C₇

F_{Δ7}

C₋₇ **F**₇

B^b_{Δ7}

⌵

C

B^b_{Δ7}

B_{o7}

F_{Δ7}
/C

D₇

G₋₇

C₇

F₆ **D**₇

G₋₇ **C**₇

Honeysuckle Rose

Fats Waller

(Up Tempo Swing)

intro latine

A

4/4

|| **A-** **A₇^b** | **G₋₇** **C₇** || **C₇_{x4}** | **F₆_{x4}** ||

4/4

G₋₇ **C₇** | **G₋₇** **C₇** | **G₋₇** **C₇** | **G₋₇** **C₇** |

| **F₆** **F₇_{/A}** | **B₆^b** **C₇** | **F₆** **B₇^b** | **A₋₇** **D₇** } :

| **F₆** | **/.** ||

B

|| **F₇** | **/.** | **B₆^b** | **/.** |

| **G₇** | **/.** | **C₇** | **/.** ||

A

|| **G₋₇** **C₇** | **G₋₇** **C₇** | **G₋₇** **C₇** | **G₋₇** **C₇** |

| **F₆** **F₇_{/A}** | **B₆^b** **C₇** | **F₆** **B₇^b** | **A₋₇** **D₇** ||

My Blue Heaven

Donaldson-Whiting

(Medium Swing)

A

$\frac{4}{4}$ $\frac{3}{4}$ **C**_{6/9}
AABA

D₇ **G**₇ **C** **B**₇^b **A**₇ **D**₋₇ **G**₇ } ^{1.}

^{2.} **C**₇ ||

Fine

B

F **A**₇ **D**₋₇ $\frac{3}{4}$

G₇ $\frac{3}{4}$ **C** **D**₇^b **D**₋₇ **G**₇ ||

D.C. al 2nd End.

When I Grow Too Old To Dream

(Medium Swing)

Sigmund Romberg, Oscar Hammerstein II (1935)

4 4		⌵		⌵		⌵	
F		⌵		F		F ₇	
B		⌵		F		D ₋ B _b ₋	
B _b		B _o		F		D ₋ B _b ₋	
F		C ₇		F		⌵	
C		⌵		F		⌵	
C ₇		⌵		F		⌵	
A ₇		⌵		D ₋		F ₇	
B		⌵		F		D ₋ B _b ₋	
B _b		B _o		F		D ₋ B _b ₋	
F		C ₇		F		^{C₇} F	

(Medium Up Swing)

Hot Soup

Exercise

$\frac{4}{4} \parallel E_7^b$	$ A_7^b$	$ E_7^b$	$ B_7^b E_7^b$	$ $
$ A_7^b$	$ A_{o7}$	$ E_7^b A_7^b$	$ G_{-7} C_7$	$ $
$ F_{-7}$	$ B_7^b$	$ E_7^b$	$ B_7^b \#9$	\parallel

Blue Drag

Joeseef Myrow

(Slow Swing)

In

4
4 || D- C B^b A |

bass intro

⌋

D- C B^b A |

Guitar intro

⌋

||

A ⌋

{ D- D- | B-7^b5 B^b₇ | D- D- | B-7^b5 B^b₇ |

AABA

/C

/C

1.

| D- | E-7^b5 | B^b₇ A₇ | D- A₇ }

2.

Fine

D-

||

B

G-6

⌋

D-

⌋

G-6

⌋

D-

C₇

B^b₇ A₇

D.S. al fine

||

Reprendre l'intro pour conclure

Do You Know What It Means - www.tradjazz.ru

(Medium Swing)

Louis Alter

A

4/4: C G₇^{#5} | C F₉ | E₋₇ A₋₇ | D₇ |
| F₆ F[#] | C₆_{/G} A₇_{b9} | D₋₇ | G₇ G₇^{#5} }
| D₋₇ G₇ | C₆ ||

B

|| B₋₇^b E₇^b | A₆^b A_o | B₋₇^b E₇^b | A₆^b |
| A₋₇ D₇ | G E₋₇ | A₋₇ D₇ | D₋₇ G₇^{#5} ||

A

|| C G₇^{#5} | C F₉ | E₋₇ A₋₇ | D₇ |
| F₆ F[#] | C₆_{/G} A₇_{b9} | D₋₇ G₇ | C₆ ||

Mama's Gone (Verseless)

(Medium Swing)

A Chorus

A		⌵		E ₇		⌵	
E ₇ ^b		⌵		A ^b		A ₇ ^b	
D ^b		D ₇ ^b		A ^b		F ₇	
B ₇ ^b		⌵		E ₇ ^b		⌵	

B		⌵		E ₇		⌵	
E ₇ ^b		⌵		C ₇		⌵	
F ₇		⌵		B ₇ ^b		⌵	
A ^b		E ₇ E ₇ ^b		A ^b		⌵	

Night Train

(Medium Up Swing)

Exercise

$\frac{4}{4}$ B_7^b	E_7^b	B_7^b	B_7^b	
E_7^b	E_{o7}	B_7^b	G_7	
C_{-7}	F_7	B_7^b	F_7	

thème / breaks / Sax solo 123 / theme

Take The A Train

Billy Strayhorn

(Medium Up Swing)

A

$\frac{4}{4}$ C_6

\div

$D_{7\#11}$

\div

D_{-7}

G_7

1.

C_6

$D_{-7} G_7$

}

2.

C_6

$G_{-7} C_7$

||

B

$F_{\Delta 7}$

\div

\div

\div

D_7

\div

D_{-7}

$G_7 G_{7\flat 9}$

||

A

C_6

\div

$D_{7\#11}$

\div

D_{-7}

G_7

C_6

$D_{-7} G_7$

||

Ain't She Sweet (Dixieland Tunes)

(Medium Up Swing)

Milton Ager, Jack Yellen (1927)

A

4/4 E^b_6 B_7 | B^b_7 | trill |

| E^b G_7 | C_7 | F_7 B^b_7 | E^b_6 B^b_7 } 1. |

| E^b E^b_7 || 2. |

B

A^b | trill | E^b | E^b_7 |

| A^b | trill | E^b | F_7 B^b_7 ||

A

E^b_6 B_7 | B^b_7 | trill |

| E^b G_7 | C_7 | F_7 B^b_7 | E^b ||

Careless Love

(Medium Swing)

W C Handy, Spencer Williams, 1921

$\frac{4}{4}$	F	C ₇	F	⌵
F	D ₇	G ₇	C ₇	
F	F ₇	B ^b	B ^b	
F	C ₇	F	⌵	

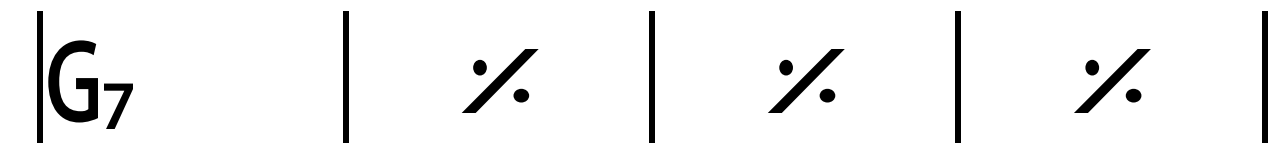
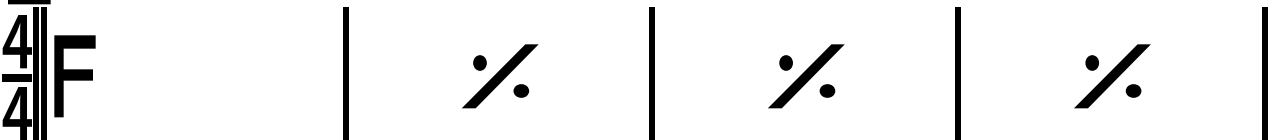
China Boy (Dixieland Tunes)

(Medium Swing)

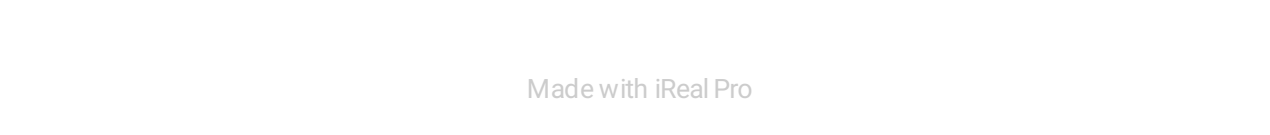
Dick Winfree, Phil Boutelje 1922

A

4/4



B



Everybody Loves My Baby (Sans Verse)

(Medium Swing)

Chorus

D-	%	%	D-7
G7	C7	F	A7
D-	%	%	%
E7	%	A7	C7
F7	%	%	%
G7	%	%	C7 A7
D-	%	%	D-7
G7	C7	F	A7

Louisiana Fairytale

(Medium Swing)

Mitchell Parish, Haven Gillespie, Fred Coots 1935

A

4/4 **B^b** | **B^b₇** | **E^b** | **E^b-** |

| **B^b** **D₇** | **G-** **G_o** | **B^b** **F₇** | **B^b** |

B

| **E^b** | **E^b-** | **B^b** | **G₇** |

| **C₇** | **⌵** | **⌵** | **F₇** |

A

| **B^b** | **B^b₇** | **E^b** | **E^b-** |

| **B^b** **D₇** | **G-** **G_o** | **B^b** **F₇** | **B^b** ||

Mooood Indigo

(Medium Swing)

A

$\frac{4}{4}$ **B^b**

| **C₉**

| **F₇**

| **B^b**

|

| **B^b**

| **C₉**

| **G^b₇**

| **F₇**

|

B

| **B^b**

| **B^b₇**

| **E^b**

| **E^b₋**

|

A

| **B^b**

| **C₉**

| **F₇**

| **B^b**

||

My Bucket's Got A Hole In It

(Medium Swing)

E^b₇

⌵

B^b

⌵

F₇

⌵

B^b

1.
B^b₇

2.
B^b

Someday You'll Be Sorry 1

(Medium Swing)

Louis Armstrong (1928)

A

4/4 **E^b** | **/.** | **D₇** | **/.** |

E^b | **E^b G₋₇ | C₇** | **/.** ||

B1.

F₋ | **B₇^b** | **E^b G₇ | C₋** |

F₇ | **/.** | **B₇^b** | **/.** }

C

A^b ^{D₇} | **F₋₇** | **A₋^b** | **E^b | C₇** |

F₋ | **B₇^b** | **E^b** | **/.** ||

When You're Smiling

(Medium Swing)

Shay - Fisher - Goodwin (1928)

A

4/4

B^b

✂

B^b_Δ

D-

B^b_Δ

✂

G₇

✂

C-

✂

C-

✂

C₋₇

✂

F₇

F₊

B^b

✂

B

||

B^b₇

✂

E^b

✂

C₇

✂

F₇

✂

B^b

✂

G₇

✂

C-

E^b-

F₇

B^b

C₋₇

F₇

✂

I'm Confessin' (That I Love You)

(Medium Swing)

Ellis Reynolds, Doc Daugherty, Al Neiburg (1930)

A

4/4 A^b E^b_+ | trill | A^b G G^b | F_7 |

| B^b_7 | E^b_7 | $A^b_{\text{trill}/C}$ F_7 | B^b_{-7} E^b_7 |

A

| A^b E^b_+ | trill | A^b G G^b | F_7 |

| B^b_7 | E^b_7 | $A^b_{\text{trill}/C}$ D^b | A^b E^b_7 |

B

| A^b_7 | trill | D^b A^b_+ | D^b C B |

| B^b_7 | trill | B^b_{-7} | E^b_7 E^b_+ ||

A

|| A^b E^b_+ | trill | A^b G G^b | F_7 |

| B^b_7 | E^b_7 | A^b D^b | A^b E^b_7 } :

Undecided

(Medium Up Swing)

Charlie Shavers

A

4/4 **B^b₆**

✂

E^b₇

✂

C₇

C₋₇ F₇

1.
B^b₆ G₇

C₋₇ F₇ }

2.
B^b₆

✂

B

F₋₇ B^b₇

✂

E^b₆

✂

G₋₇ C₇

✂

F₇

✂

A

B^b₆

✂

E^b₇

✂

C₇

C₋₇ F₇

B^b₆

✂